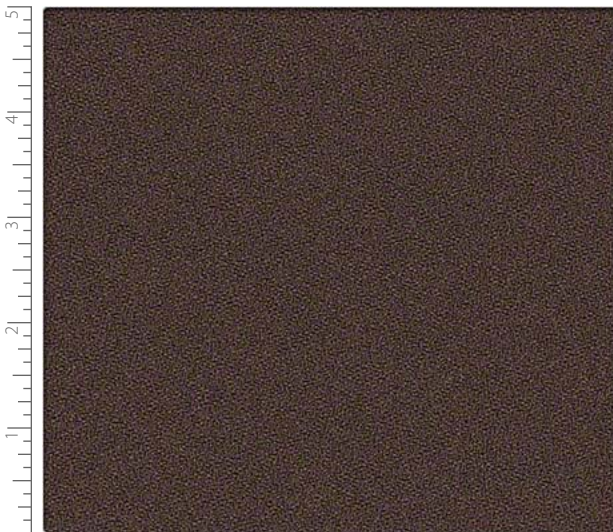


NH509 Galaxy



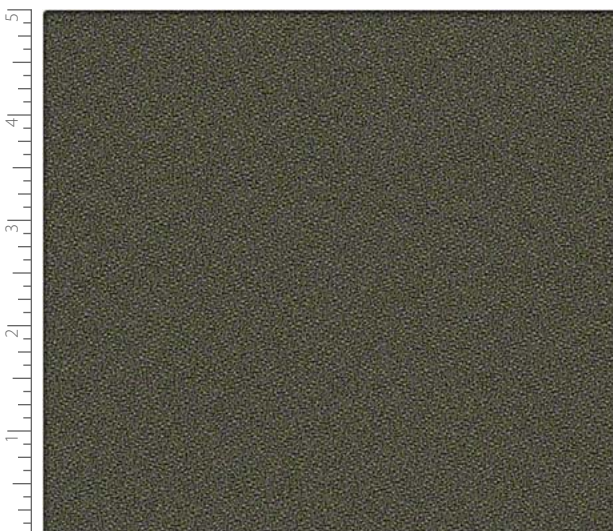
NH422 Napa



NH424 Cocoa



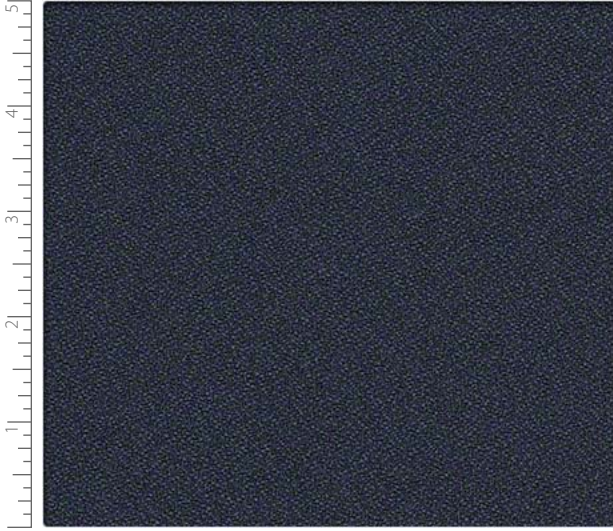
NH420 Jodhpurs



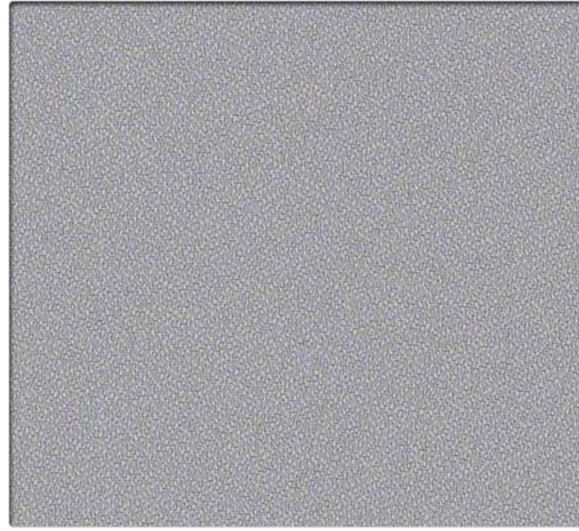
NH425 Zen



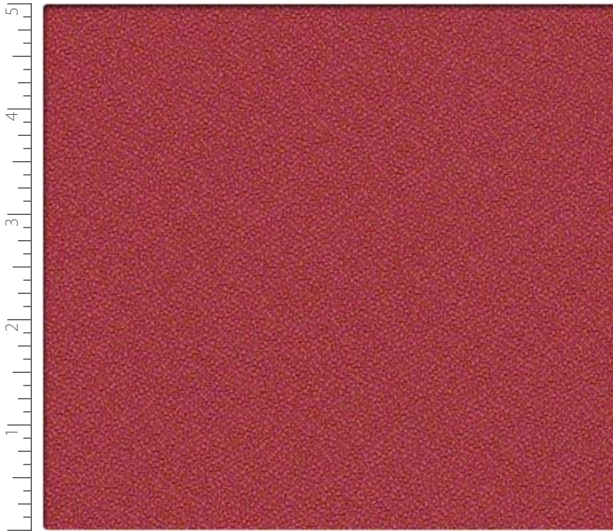
NH395 Grey



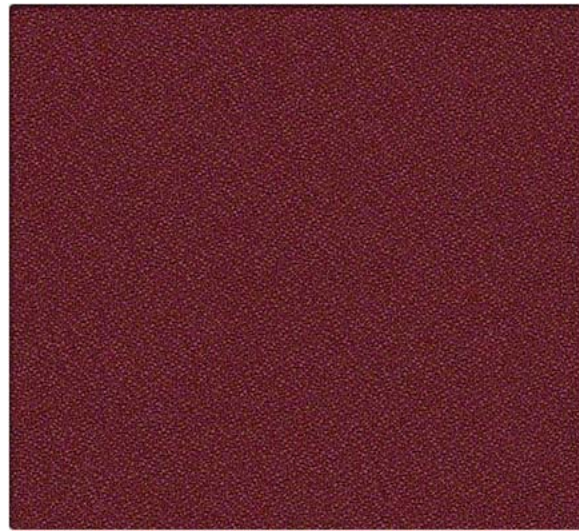
NH369 Navy



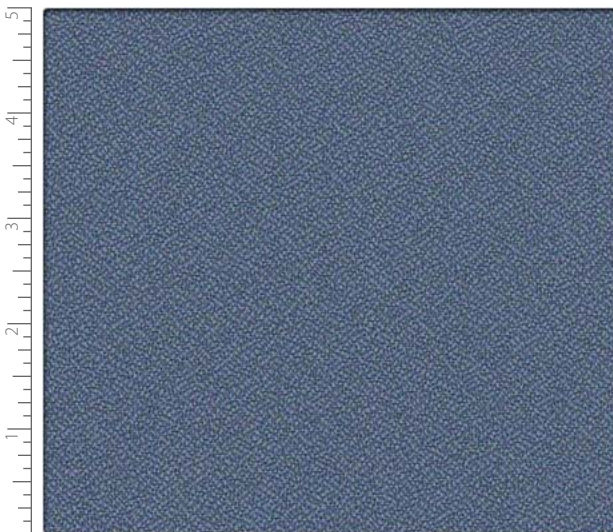
NH361 Nickel



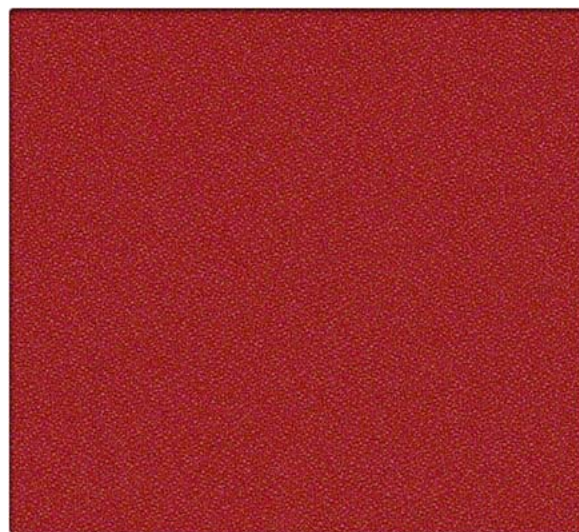
NH388 Raspberry



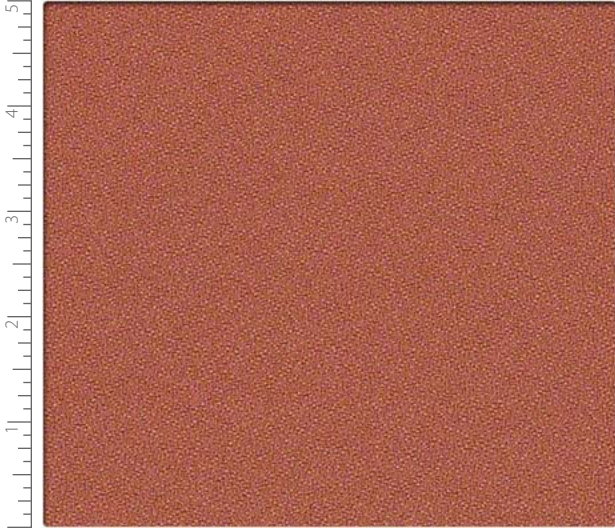
NH389 Red Red Wine



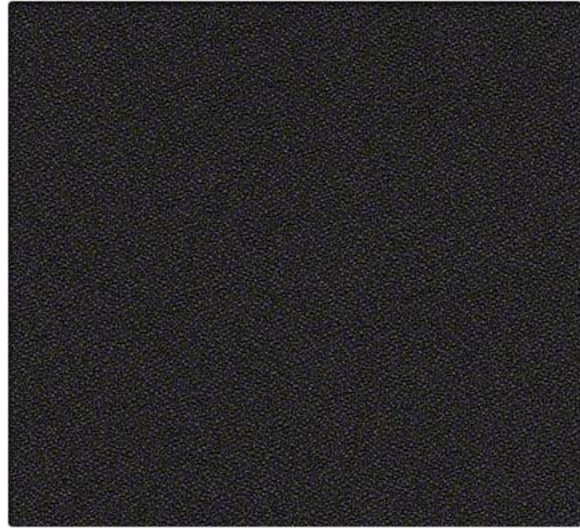
NH366 Steel



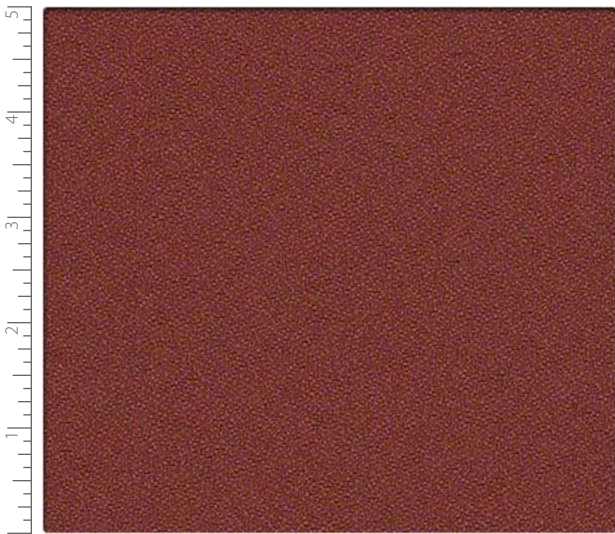
NH406 Fire



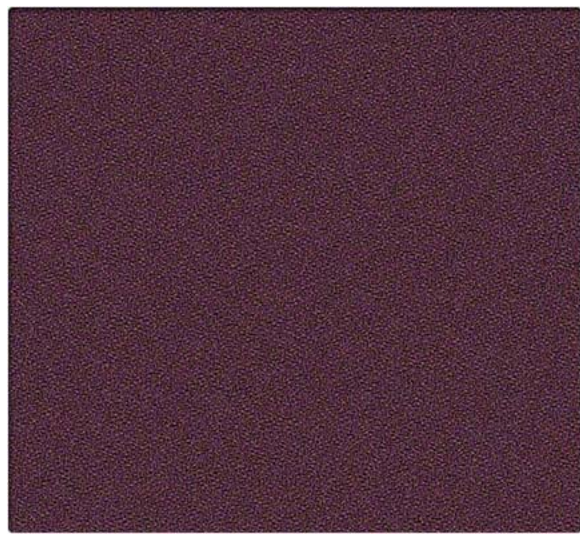
NH416 Emberglow



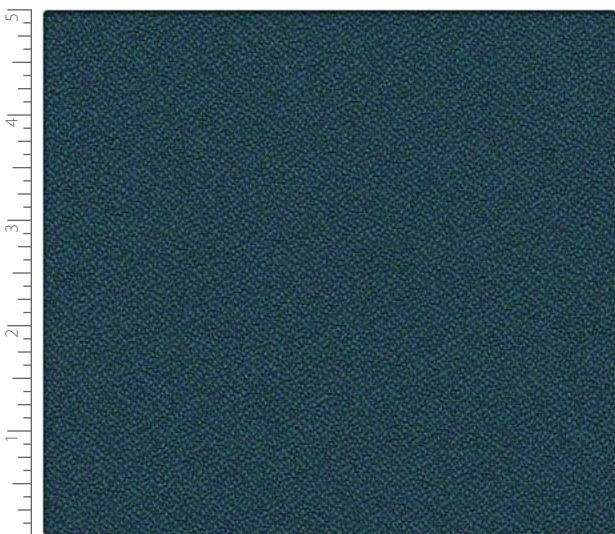
NH333 Black



NH434 Brick



NH419 Aubergine



NH359 Azure

New Hempstead

PERFORMANCE FABRIC

Performance Summary

- Enhanced soil + stain resistance
- Enhanced abrasion resistance

Cleaning and Maintenance

Cleaning Code: **(W-S)** For water-based stains use water-based cleaners. For oil-based stains use solvent-based cleaners. We recommend using a professional cleaning service.

For additional cleaning information visit cfstinson.com

For complete specifications visit cfstinson.com

Dye lots may vary slightly.

* This term and any corresponding data refer to the typical performance in the tests indicated and should not be construed to imply the behavior of this or any other material under actual fire conditions.

** Multiple factors affect fabric durability and appearance retention, including end-user application and proper maintenance. Wyzenbeek results above 100,000 double rubs have not been shown to be an indicator of increased lifespan.

Specifications



Content	100% Polyester
Finish	Non-PFOA Stain Resistant
Backing	Polyester
Weight	13.5 oz./lin. yd. ± 1.0 oz.
Width	54 inches
Roll Size	60.0 yards

Performance Characteristics

Abrasion Resistance** ASTM D-4157	Exceeds 750,000 double rubs - heavy duty
Break Strength ASTM D-5034	Warp: 366 lbs. min., Fill: 325 lbs. min.
Tear Strength ASTM D-2261	Warp: 71 lbs. min., Fill: 59 lbs. min.
Seam Slippage ASTM D-4034	Warp: 73 lbs. min., Fill: 82 lbs. min.
Brush Pilling ASTM D-3511	Class 4.5 min.
Colorfastness to Light AATCC-16	60 Hours, Class 4.0
Crocking AATCC-8	Dry: Class 4.0, Wet: Class 4.0

Flammability*

California 191-53 Technical Bulletin 117, Section E	Passed
UFAC	Class 1
NFPA 260	Class 1

May contribute to compliance with California Technical Bulletin 133 when used in conjunction with other suitable components.



Stinson®

C.F. Stinson, LLC
2849 Product Drive
Rochester Hills, MI 48309

P 800 841 6279
F 248 299 3884

cfstinson.com